

TERRA-SAP

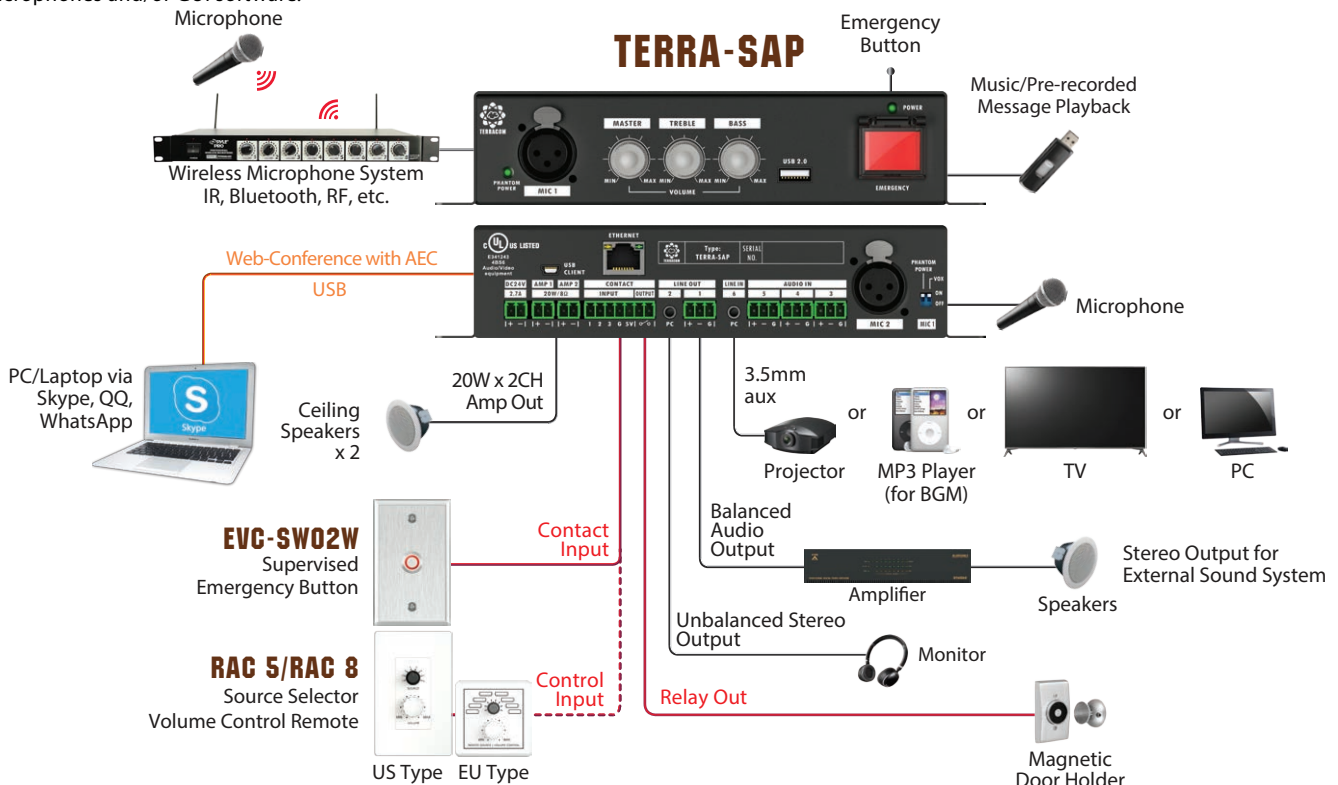
*"WORLD'S MOST POWERFUL, COMPACT, FULL-FEATURED
IP-BASED CLASSROOM SOUND REINFORCEMENT SYSTEM WITH
INTEGRATION OF AUDIO CONFERENCING APPLICATIONS"*



TERRACOM is a full-featured audio over IP and school IP intercom, paging, bell scheduling, messaging and audio streaming system – all over IP - without the need for expensive, complicated servers or specialized software. The TERRACOM system is HTML browser-based programming and includes all the components you need to create a complete networked communications system over IP, and this will be an integral component to help your educational facility remain a safe and secure environment for students and faculty. TERRACOM audio over IP products features a full-range of SIP-ready IP Speakers/horns decoders, encoders, touchscreen paging microphones, call stations, optional custom GUI software - and our newest addition to the TERRACOM family – the Terra-SAP – a SIP-ready IP audio mixer for the classroom sound reinforcement application. As with all TERRACOM IP Speakers/Horns, the Terra-SAP has full built-in DSP complete with AEC for mic inputs.

The Terra-SAP (Mini Audio DSP Processor) is an integral classroom IP device with full DSP, used to integrate all your local audio sources within the classroom with the TERRACOM overall audio IP system – without the need for additional sets of speakers for intercom! The Terra-SAP acts as the audio hub inside the classroom for locally connected audio devices such as wireless microphones (Bluetooth, IR, RF, etc.), PC audio, Display or Projector audio, etc.. The Terra-SAP can also utilize our specialized ceiling-mounted boundary microphones for in-classroom sound reinforcement complete with AEC and as the talkback microphone for hands-free intercom - all using the same speakers including automatic muting of the local program audio!

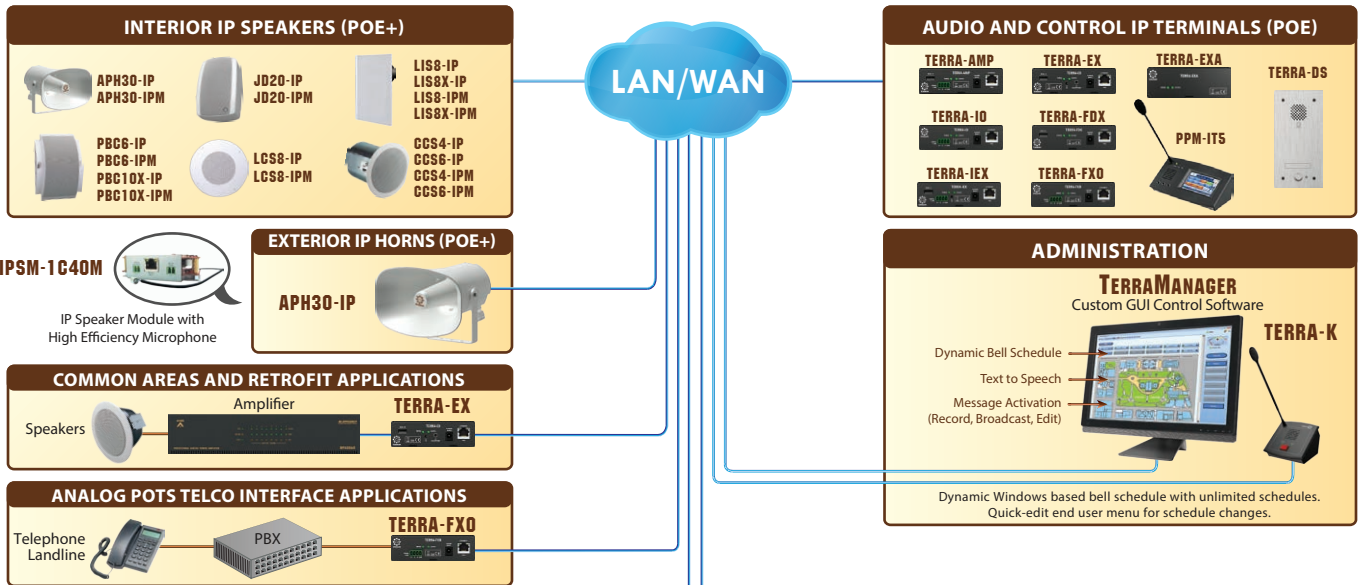
The Terra-SAP includes 2 XLR Microphone inputs – 1 has switchable phantom power, 3 screw-terminal mic inputs for local sound and assignable intercom use, 1 3.5mm input jack for local program audio input. The Terra-SAP also has 1 3.5mm output jack and 1 screw-terminal balanced audio output. The Terra-SAP has 8-ohm, 20w x 2ch Class-D amplifier outputs for local classroom speakers, and also includes 1 USB2.0 port for music and/or message storage or it can be used as a record output to USB storage device. There is a mini-USB input for connection to PC for use as WEB conferencing with built-in AEC. There are also 3 Logic Control inputs for call-in buttons, analog local volume control and audio input selection can be controlled with our optional RAC 5/8 controllers, and/or can be used as emergency message, call-in activation or output relay trigger. A built-in push-button with protective security cover on the front of the Terra-SAP can also be programmed for call-in, emergency call activation for alerting a central monitoring station to respond incidents, internal message playback or relay trigger. There is also an on-board programmable FORM-A relay output that can be triggered via local logic input, logic input from any TERRACOM device in the intercom system, or manually from paging microphones and/or GUI software.



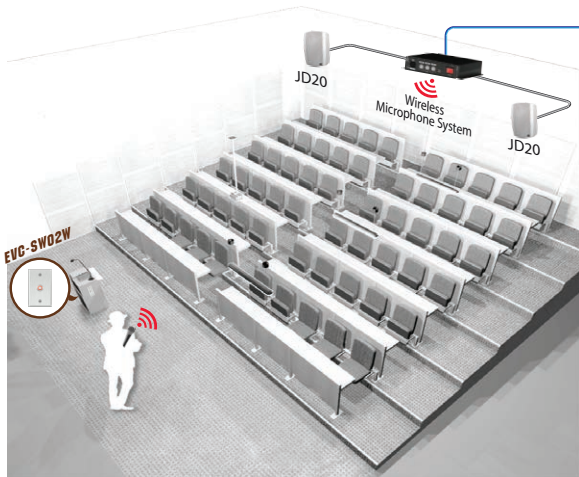
The Skype name, associated trade marks and logos and the "S" logo are trade marks of Skype or related entities.

- IP-Based with HTML browser-based programming - no special software or training required
- SIP Included - simply registers as SIP endpoint on most SIP servers, including Cisco Call Mng., Avaya, Shore-Tel, etc.
- Full Audio DSP (FBX, Noise Reduction, PEQ, Comp/Limiter, Filters, Audio Matrix, AGC)
- 7 inputs (2 Microphone XLR, 3 Balanced MIC/Line, 1 3.5mm aux, 1 USB)
- 1 XLR with switchable Phantom Power and VOX operation
- Selectable MIC input for IP Intercom talk-back during SIP calls (local sound and IP intercommunications uses same speakers)
- Front panel knobs for MIC and Aux level control
- 2 speaker outputs (20W x 2 @ 8ohm)
- 2 Aux outputs (1 balanced audio via 3.5mm or Phoenix and record/conf. out via mini-USB w/ AEC)
- AEC (Acoustic Echo Cancelling) included for each MIC input
- Programmable input priority mixing
- Small and compact - mount under desk or on wall - no rack required

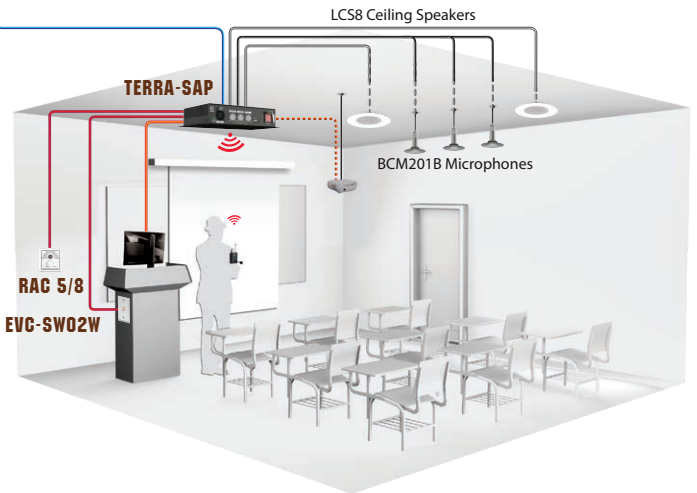
SYSTEM DIAGRAM



LECTURE HALL/AUDITORIUM



CLASSROOM








CONFERENCE ROOM




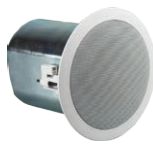




The Skype name, associated trade marks and logos and the "S" logo are trade marks of Skype or related entities.

SYSTEM COMPONENTS

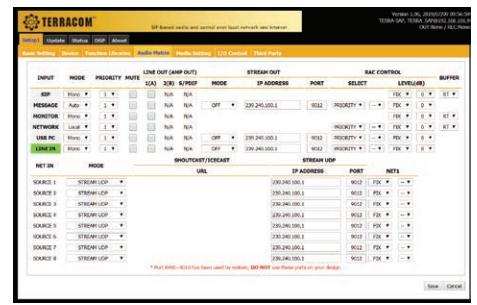
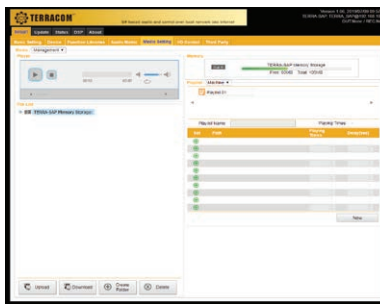
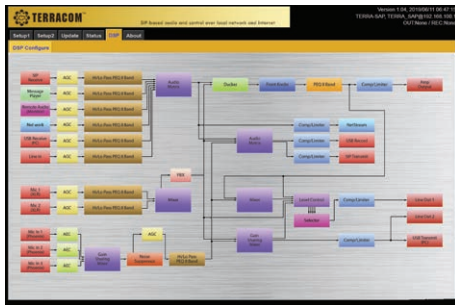
 <p>TERRA-SAP Mini Audio DSP Processor</p> <ul style="list-style-type: none"> • 2 microphone inputs with master volume control and bass/treble sound level adjustment • 1 monitored emergency button to alert central monitoring station • USB 2.0 interface for record out and music/pre-recorded message playback • 20W x 2CH (Class-D amp) amplification on 8 ohm load • Sensitivity adjustment/phantom power/voice activated (VOX) for microphone input • 1 stereo line input for background music • 3 balanced mic inputs used for intercom between student and administration • 3 supervised control inputs for hidden emergency button or programmable source selector and volume control (RAC5/8) • Mini-USB interface to connect to PC/Laptop for web conferencing • 1 relay control output and 1 Ethernet port • 24VDC power input (2.7A) 	 <p>BCM201W Boundary Microphone(White)</p> <p>BCM201B Boundary Microphone(Black)</p> <ul style="list-style-type: none"> • Capsule type: Electret condenser • Designed in high definition, omnidirectional microphone capsule • Connected to the balanced mic input of TERRA-SAP, providing hands-free intercom, recording and speech monitoring applications
 <p>EVC-SW01W Supervised Emergency Button</p> <p>EVC-SW02W Supervised Emergency Button (Metal)</p>	 <p>PPM-IT5 Programmable IP Paging & Intercom Console</p> <ul style="list-style-type: none"> • 5" TFT LCD colour touch panel • Full duplex intercom with AEC and NR, zone selection, paging and control • Internal 80 MB storage for message recording and music playback • Support G.711, G.722, G.726, G.727, G.729, MP3 audio codec and AAC+ decoder <p>US Type</p>  <p>RAC 5/8 5/8 Steps Level and Source Selector</p> <p>EU Type</p>

ACTIVE IP LOUDSPEAKERS

 <p>APH30-IP IP Horn Speaker (20W External 24VDC/PoE+)</p> <p>APH30-IPM IP Horn Speaker with Mic (20W External 24VDC/PoE+)</p>	 <p>LIS8-IP LIS8X-IP LIS8-IPM LIS8X-IPM</p> <p>Lay-in Tile IP Speaker (5W External 24VDC/PoE+) Lay-in Tile 2 Way IP Speaker (15W External 24VDC/PoE+) Lay-in Tile IP Speaker with Mic (5W External 24VDC/PoE+) Lay-in Tile 2 Way IP Speaker with Mic (15W External 24VDC/PoE+)</p>
 <p>JD20-IP Music Cabinet Loudspeaker (20W External 24VDC/PoE+)</p> <p>JD20-IPM Music Cabinet Loudspeaker with Mic (20W External 24VDC/PoE+)</p>	 <p>CCS4-IP CCS6-IP CCS4-IPM CCS6-IPM</p> <p>4" Pro-Ceiling IP Speaker 2 Way (20W External 24VDC/PoE+) 6" Pro-Ceiling IP Speaker 2 Way (30W External 24VDC/PoE+) 4" Pro-Ceiling IP Speaker 2 Way with Mic (20W External 24VDC/PoE+) 6" Pro-Ceiling IP Speaker 2 Way with Mic (30W External 24VDC/PoE+)</p>
 <p>LCS8-IP Twin-Cone IP Speaker (4W External 24VDC/PoE+)</p> <p>LCS8-IPM Twin-Cone IP Speaker with Mic (4W External 24VDC/PoE+)</p>	
 <p>PBC6-IP Open-Back Wall-Mount IP Speaker (6W External 24VDC/PoE+)</p> <p>PBC6-IPM Open-Back Wall-Mount IP Speaker with Mic (6W External 24VDC/PoE+)</p> <p>PBC10X-IP Open-Back Wall-Mount IP Speaker (10W External 24VDC/PoE+)</p> <p>PBC10X-IPM Open-Back Wall-Mount IP Speaker with Mic (10W External 24VDC/PoE+)</p>	

FEATURES

- Control, monitor, programming and management via HTML web browser
- Full-featured solution including paging, audio streaming, messaging, bell scheduling, AEC hands-free intercom, voice evacuation, etc.
- Full DSP for advanced audio adjustments such as input muting priority management, EQ, Filters, Noise Suppression, AEC, Comp/Limiter, Feedback control, AGC and I/O level adjustments – all via HTML web browser programming
- 20W x 2CH Class-D amplification plus one line level audio out on Terra-SAP
- Stored pre-recorded messages with scheduling
- USB audio in and record out
- Full DSP with built-in paging and intercom compatibility
- Logic inputs x 3 and relay output x 1



CONTACTS



ATEiS Europe B.V.
Europe & Africa
 Celsiusstraat 1 - 2652 XN Lansingerland
 (Rotterdam Region), Netherlands
 Tel: +31 (0)10 2088690
 info@ateis-europe.com



ATEiS Suisse SA
 Avenue des Baumettes 9, 1020 Renens VD,
 Switzerland
 Tel: +41 (0)218812510
 info@ateis.ch



ATEiS France
 8, rue de l'Europe - ZA de Font Ratel,
 38640 Claix, France
 Tel: +33 (0)4 76992630
 contact@ateis.com



ATEiS SE Europe
Serbia
 Sime Lukina Lazića 12-B, 11040 Belgrade
 Serbia
 Tel: +381 (0)11 40 89 617
 info@ateisseurope.com