



METAL SOUND PROJECTOR BI-DIRECTIONAL

CELL20/BDT

This on both sides sound expansion elegant, high-quality sound projector is made of extruded aluminum coated with plastic. The robust construction ensures high protection against vandalism and makes it suitable for use in shopping centers, railway stations, prisons, etc.

The specially treated chassis provides excellent speech intelligibility as well as excellent reproduction of background music.



● Electrical	
Rated power, watts	2x20W (Bi-directional)
Tappings 100 volt line, watts	40/20/10/5
Transformer Impedance, ohms 100V	250/500/1k/2k
Tappings 70.7 volt line, watts	20/10/5/2.5
Driver impedance, ohms	4
Effective Frequency Range, Hz (BSEN60268-5)	120-18k
S.P.L. @ 1m, 1watt, dB, test signal bandwidth 100Hz - 10kHz	87
S.P.L. Full power, octave bandwidth, dB	103
Acoustic power (dB-PWL @ 1 watt) 1k/2k Hz, dB	89/86
Dispersion at 1k/2k Hz, Degrees	160/120 (each direction)
Directivity axial Q factor, 1k/2k Hz	1.9/2.2 (each direction)
● Environmental	
IP-rating	55
Min/Max amb temp	-25°C to 70°C
Relative humidity	n/a
● Mechanical	
Dimensions, front and depth, mm	140x196
Net weight, kg	2.95
Colour/Finish	White RAL9016
Material	Aluminium with Stainless steel hardware
Mounting	Aluminium sliding bracket



ATEIS Europe B.V.

Celsiusstraat 1, 2652 XN Lansingerland, Netherlands

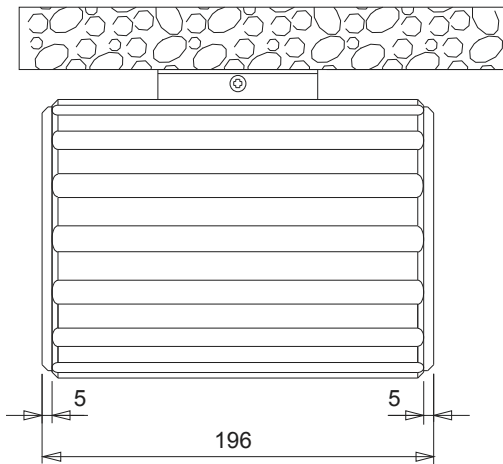
Phone +31 (0)10 208 86 90, www.ateis-europe.com, info@ateis-europe.com



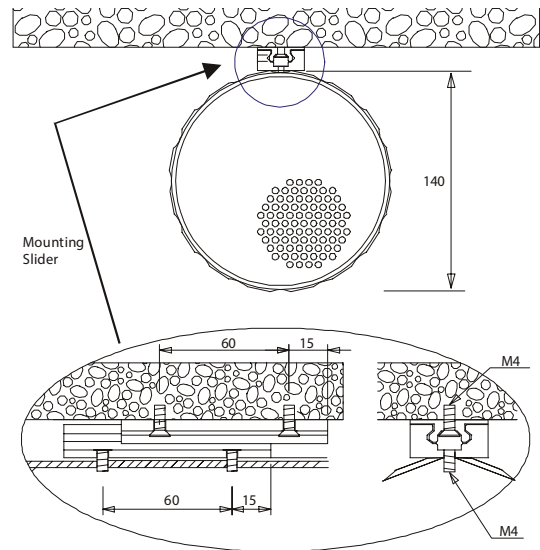
INSTALLATION GUIDE

CELL20/BDT

Side view
(unit: mm)



Front view
(unit: mm)



1) Remove the sliding bracket from the unit by using an Allen Key inserted into position "B" as shown on the above drawing.

2) Place the part of the bracket that you have just removed into the required mounting position and mark fixing holes and then fix (bracket only).

3) Select from the 5 core cable (position "A" on the drawing) the tapping required i.e.

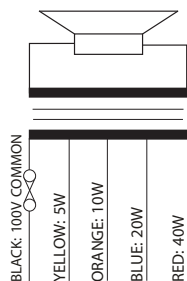
Example, Black wire = common and Red wire = maximum power.

Please ensure that the cable is connected to the correct terminals in your selected junction box and that no other connections from the loudspeakers are made. The unused transformer tapping must always be isolated from one another to avoid a short circuit.

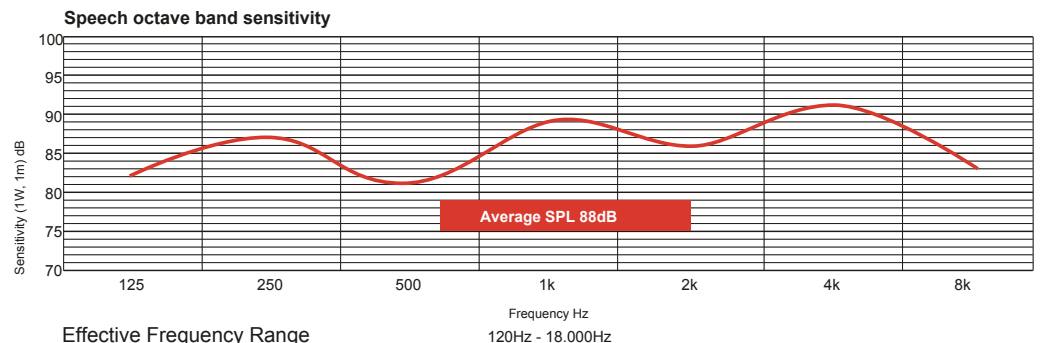
4) The loudspeaker is now in the position to be mounted onto the pre-mounted bracket previously fitted to your chosen position.

5) Before putting 100 volt line through the units it is advisable to check the impedance of the circuit.

6) On checking the line impedance the speaker is in an operational mode.



Circuit Diagram



Disclaimer: We reserve the right of changes and errors.



ATEIS Europe B.V.
Celsiusstraat 1, 2652 XN Lansingerland, Netherlands
Phone +31 (0)10 208 86 90, www.ateis-europe.com, info@ateis-europe.com

